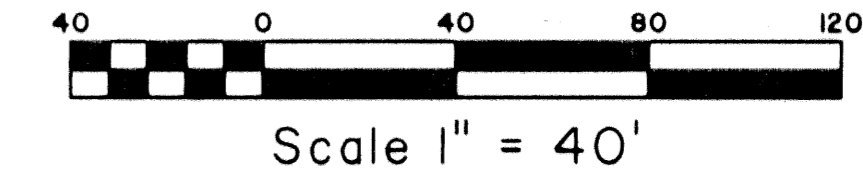
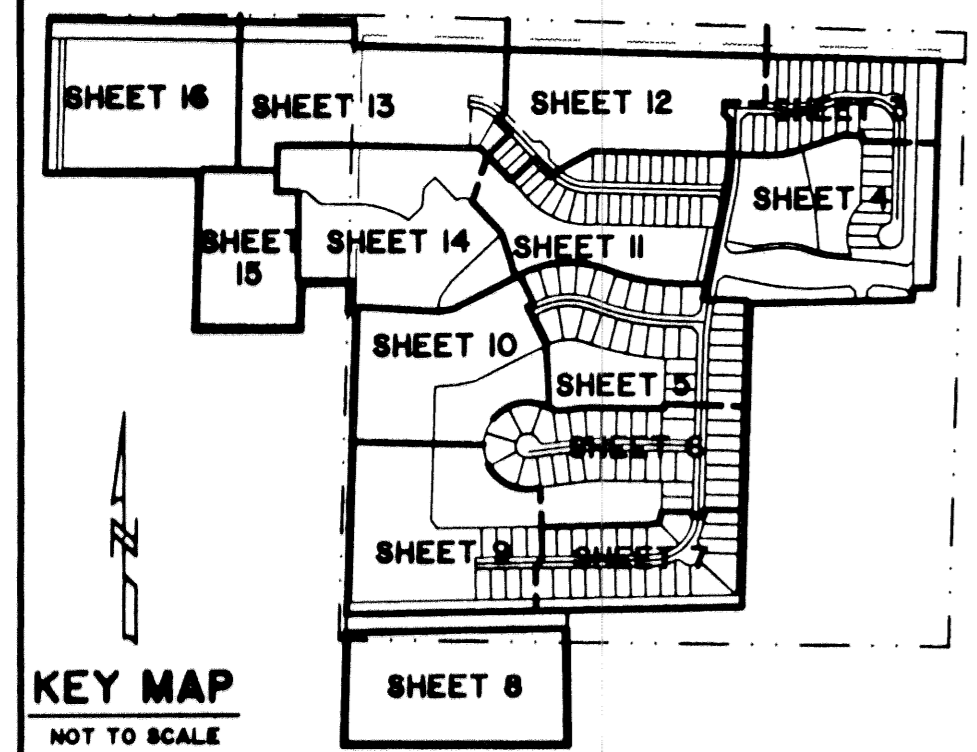


BELLA TERRA P.U.D. PLAT NO. 1

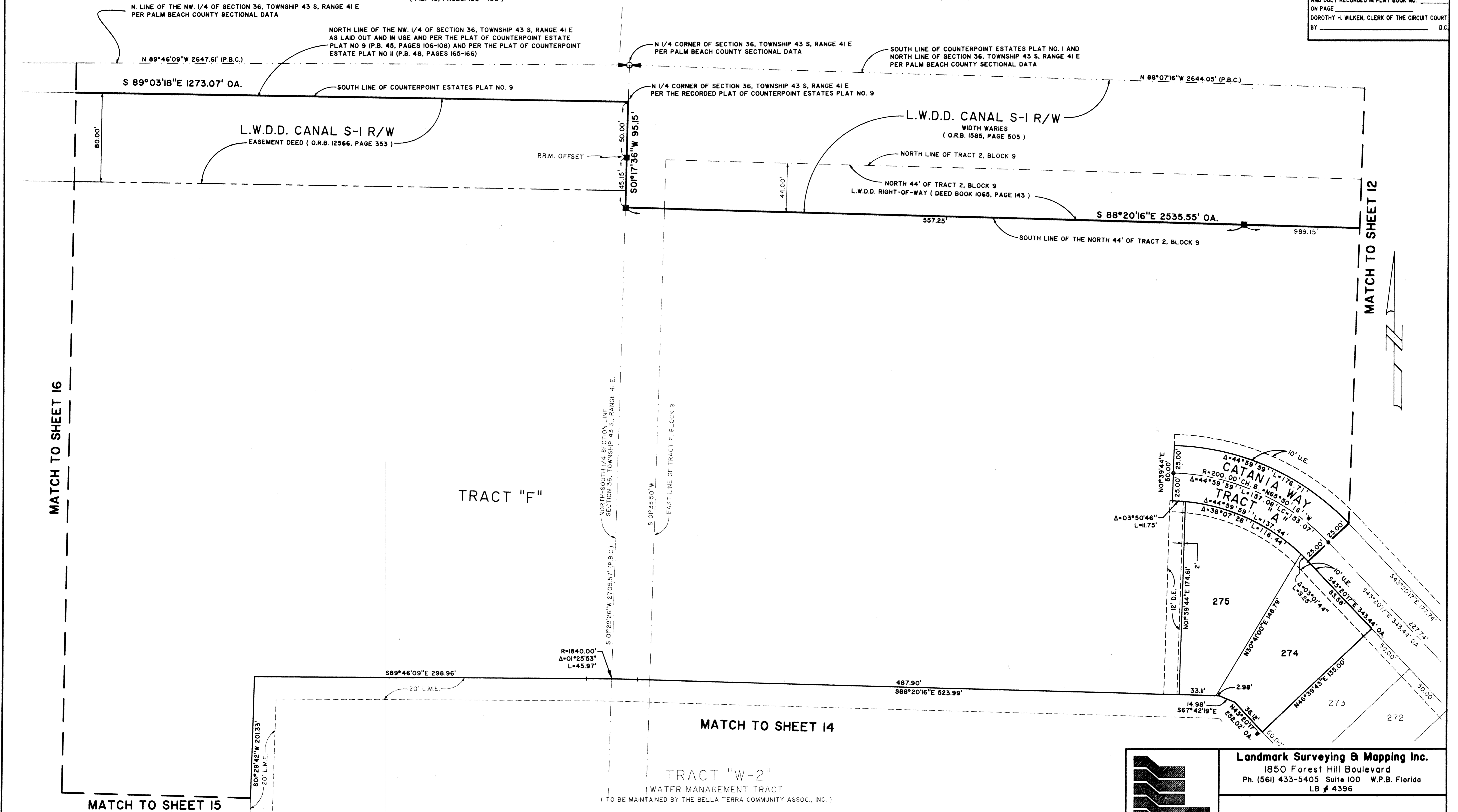
BEING A REPLAT OF A PORTION OF BLOCK 9, PALM BEACH FARMS COMPANY PLAT NO. 3, AS RECORDED IN PLAT BOOK 2, PAGES 45 THROUGH 54, PUBLIC RECORDS OF PALM BEACH COUNTY, FLORIDA AND A PORTION OF SECTION 36, TOWNSHIP 43 SOUTH RANGE 41 EAST, VILLAGE OF ROYAL PALM BEACH, PALM BEACH COUNTY, FLORIDA.
FEBRUARY, 2002 SHEET 13 OF 16



STATE OF FLORIDA SS
COUNTY OF PALM BEACH
THIS PLAT WAS FILED FOR RECORD AT _____
M., THIS _____ DAY OF _____ 2002
AND DULY RECORDED IN PLAT BOOK NO. _____
ON PAGE _____
DOROTHY H. WILKEN, CLERK OF THE CIRCUIT COURT
BY _____ D.C.

COUNTERPOINT ESTATES PLAT NO. 9
(P.B. 45, PAGES 106 - 108)

COUNTERPOINT ESTATES PLAT NO. 1
(P.B. 32, PAGES 156 - 160)

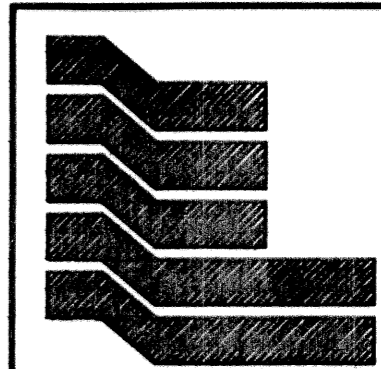


MATCH TO SHEET 16

MATCH TO SHEET 12

MATCH TO SHEET 15

MATCH TO SHEET 14



Landmark Surveying & Mapping Inc.
1850 Forest Hill Boulevard
Ph. (561) 433-5405 Suite 100 W.P.B. Florida
LB # 4396

BELLA TERRA P.U.D. PLAT NO. 1